



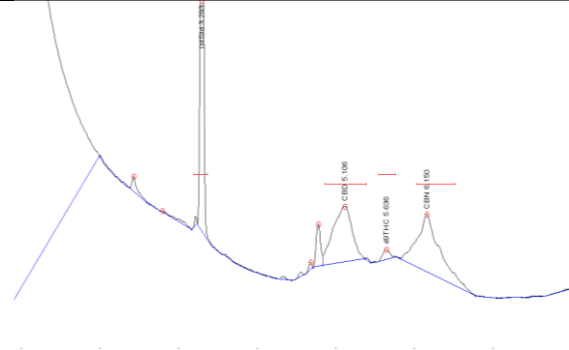
Phone: (802) 885-8649

Website: www.cranalyticallabs.com

Email: admin@cranalyticallabs.com

Certificate of Analysis

Customers Name: Green Mountain Hemp Co. Sample: 150mg Pet Dropper Bottle Type: Infused Method: GC Hemp Registration #: Batch #: 00000432	Test Conditions Scale: EB Model 2003 Temp: 71° F Humidity: 45% Baro. Pressure: 987.5 hPa Technician: FR	Receiving Technician: FR Serving Size (g): 1.0ml Harvest Date: Date Received: 02-08-19 Test Date: 02-13-19 Test Certificate #: 21131910 Expires: 02-31-19
---	--	--



CANNABINOID PROFILE

Test Compounds	THCV*	THC	THCA-A	d8-THC*	CBDV*	CBD	CBD-A	CBG*	CBN
Amount	N/D	0.08mg	N/D	N/D	N/D	122.1mg	N/D	N/D	45.1mg
	0.3%	0.3%	0.3%	0.3%	0.3%	0.3%	0.3%	0.3%	0.3%
Uncertainty	+5% RSD	+5% RSD	+5% RSD	+5% RSD	+5% RSD	+5% RSD	+5% RSD	+5% RSD	+5% RSD

Humidity:	N/A
Total THC	0.08 mg
Total CBD	167.2 mg

LOQ= Limit of Quantitation; %RSD= Relative Standard Deviation; N/D = Not Detected

*Designates Compounds that are not currently included in CR Analytical Labs accredited scope.

N/A= Not Applicable

Calc. Max is calculated sum of CBD or THC and the amount of CBD or THC derived from CBDA or THCA, respectively.

These values are calculated by applying a molar correction factor of 0.877 to the CBDA or THCA value.

This analysis process was performed in accordance with the requirements of ISO/IEC 17025. Values reported relate only to the product tested. CR Analytical Labs makes no claims as to the efficacy, safety, or other risks associated with any detected or non-detected levels of any compound reported herein. These results relate only to the test article listed in this report. Reports may not be reproduced except in their entirety.

Dr. Fabio Rodi
Lab Manager